



Premium AQP-SFS3-B

*HOT & COLD
COLD & ROOM
Stainless Steel Floorstanding
Water Dispenser*

*Users
Manual &
Warranty*

CUSTOMER CARE LINE:
(08) 8354 0711
aquaport@aquaport.com.au

Bottle not included




USER MANUAL & WARRANTY

Please read through the instructions carefully before using the product and ensure the manual is kept in a safe place for future reference.



FLOORSTANDING WATER COOLER SAFETY

To ensure the safety of yourself and others please carefully read and adhere to ALL safety warnings

This is the safety symbol. 
The safety symbol appears throughout this manual.
The safety symbol alerts you to potentially harmful situations, always read and obey these warnings.

Electrical Requirements
North America 110V / 60Hz
Australia / New Zealand 240V / 50Hz
EU 230V / 50-60Hz

CUSTOMER CARE LINE: (08) 8354 0711
aquaport@aquaport.com.au

IMPORTANT SAFEGUARDS

WHEN USING ELECTRICAL APPLIANCES, BASIC SAFETY PRECAUTIONS SHOULD ALWAYS BE FOLLOWED.

- Read all instructions carefully.
- To protect against fire, electric shock and personal injury, do not immerse cord, plugs, or appliance in water or other liquid.
- Close supervision is necessary when any appliance is used by or near children.
- Unplug from outlet when not in use and before cleaning.
- Do not operate any appliance with a damaged cord or plug or after the appliance malfunctions, or has been damaged in any manner.
- Return appliance to the nearest authorized service facility for examination, repair or adjustment.
- The use of accessory attachments not recommended by the appliance manufacturer may result in fire, electric shock or personal injury.
- Do not use outdoors.
- Do not let cord hang over edge of table or counter, or touch hot surfaces.
- Do not place on or near a hot gas or electric burner, or in a heated oven.
- Turn all switches to “off” then remove plug from wall outlet.
- Do not use appliance for other than intended use.
- This appliance should always be used in conjunction with a Clipsal safety switch.

SAVE THESE INSTRUCTIONS

THANK YOU FOR YOUR PURCHASE OF OUR AQUAPORT PRODUCT.

- Place unit in a flat well-ventilated location at least 4 inches from wall or other Appliances.
- Ensure unit is properly grounded.

For best performance, do not place the unit near an oven, heater, direct sunlight or other heat source.

SPECIAL PRODUCT INSTRUCTIONS:

These appliances are designed for either household or personal use. Each model is designed to supply a certain maximum number of servings per hour. Please consult with your sales representative or our Website for the proper Aquaport unit for your specific needs. Any servicing other than cleaning and user maintenance will violate the terms of this WARRANTY.



CAUTIONS:

- Do not immerse base in water or try to disassemble.
- To reduce the risk of fire or electric shock, turn off power when replacing water bottles.
- Only Authorized service personnel should do repairs (No user serviceable parts inside)
- Check voltage to be sure that the voltage indicated on the nameplate agrees with your voltage.
- Never clean with scouring powders or abrasives.
- Keep the product away from direct sunlight.
- When the product is not in use for over a week, please let the remaining water out of the lower barrel.
- Please disassemble and clean the unit according to the directions after 2 months or approx 40 Gallons / 150 Litres of water is used, or the water flow becomes less apparent.

User's Manual & Warranty

PREMIUM FLOORSTANDING PARTS



BACK OF UNIT

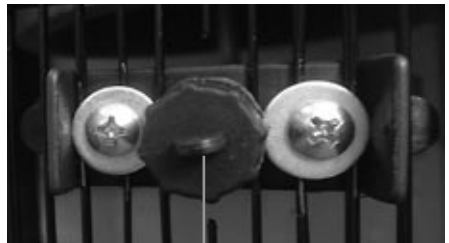


COOLING
& HEATING
SWITCHES

COLD WATER
TEMPERATURE
CONTROL

COLD TAP
CHILD SAFE HOT TAP

DRIP TRAY



REAR
DRAIN
PLUG

HIGH QUALITY
STAINLESS STEEL BODY

OPERATION INSTRUCTIONS



WARNING: NEVER turn on heating switch before the water runs out of the red tap, otherwise the machine could be damaged.

Step 1: Vertically insert the bottle into the bottle support on top of the machine. (Remove bottle cap if necessary). Push the taps until water runs out.

Step 2: Insert the plug into power socket and switch on.

Step 3: Turn on the unit (switch located at back of unit). For Hot & Cold units, switch on both heating and cooling switches.

Step 4: When optimal temperature is reached green/red light automatically switches off.

Note: Optimal temperature for cold is about 5°C and optimal temperature for hot is between 85°C and 94°C

**Do not hesitate to contact our Customer Care Service line on
(08) 8354 0711
aquaport@aquaport.com.au**

User's Manual & Warranty

FUNCTION

This product is capable of serving hot and cold water all day long, which can be used for tea, coffee and juices.



**Always dispense HOT water with caution.
Always closely supervise children around this appliance.**



ATTENTION

If either the hot or cold water is not needed for a prolonged period, turn off either the heating or the cooling switches located at the back of the unit in order to conserve energy. If you switch off one switch it will not impede the performance of the other heating/ cooling function.

In the case you will not be using the machine for a long period, turn off all switches and drain water from the unit via the drain plug located at the rear of the unit.

Never unplug by pulling the power cord, as it will cause cord damage. Always turn on/off the machine by switching the heating or cooling switches at the back of the unit.

The thermostat has been adjusted; there is no need to adjust it by yourself.

This machine should not be turned on within 3 minutes of turning this machine off.

CLEANING AND USER MAINTENANCE

It is recommended that the unit is disassembled and cleaned every 2-3 months.



WARNING: Before cleaning unit turn off power and unplug unit to avoid electrical shock.

Hand wash all components:

- Remove bottle supporter and spike, twist anti-clockwise and lift.
- Pull out inner float (or baffle)
- Wash the stainless steel tank reservoir and rinse out. Drain all water out through the rear drain plug with a bucket. **DO NOT GET ANY WATER ON THE UNIT.**

**Do not hesitate to contact our Customer Care Service line on
(08) 8354 0711
aquaport@aquaport.com.au**

Use a soft damp cloth to wipe down the unit.

Do not submerge the unit in water or spray with any substance, including water.

After cleaning the product, replace water bottle and ensure water is running out of the taps before turning on the power switch.

YOUR AQUAPORT 12 MONTH REPLACEMENT WARRANTY & WATER CHILLER WARRANTY REGISTRATION

Aquaport warrants this appliance to the first purchaser as follows and subject to the stated conditions:

Any fault in the appliance occurring with in the first twelve months from the date of purchase (3 months commercial use) will be repaired or the unit will be replaced at our discretion.

CONDITIONS OF THIS WARRANTY

1. This appliance must be installed in accordance with the User's Manual.
2. The Warranty extends only to repairing or replacing any component that proves to be defective in material or workmanship.
3. The Warranty does not cover defects occasioned by misuse, alterations or accident.
4. In the unlikely event of malfunction of our product please phone our customer service line for advice on +61 8 8354 0711 in Australia or take it to your nearest Service Centre.

To enable us to register your warranty and provide service should a problem occur, we recommend you fill out the section below and return it to us immediately.



WARRANTY & SERVICE REGISTRATION FORM

Please fill in and return by fax or post to:

Innovative Importers Warranty Department. Facsimile: +61 8 8354 0722

Postal address: PO Box 81, Findon, South Australia, 5023, AUSTRALIA

Contact Name: _____

Phone: _____ Fax: _____ Mobile: _____

Address: _____ Email: _____

Country: _____ Post Code: _____

MODEL NUMBER: _____ SERIAL NUMBER: _____

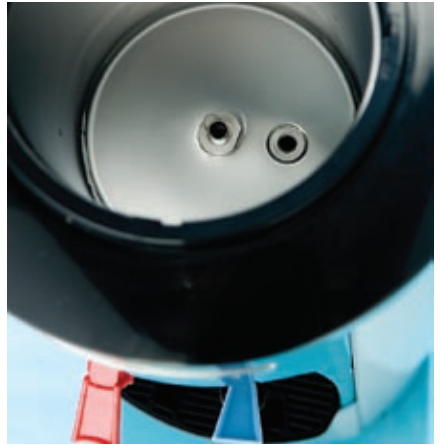
Date of Purchase: _____ Purchase From: _____

Private or Commercial use: _____ If commercial state

Company Name: _____



AQUAPORT.
water for life



Innovative Importers Pty Ltd

PO BOX 81 Findon SA 5023 Australia

Telephone: +61 8 8354 0711 Facsimile: +61 8 8354 0722

Email: aquaport@aquaport.com.au Web: www.aquaport.com.au